



India Meteorological Department
(Ministry of Earth Sciences)

BULLETIN NO. 7 (BOB/06/2022)

TIME OF ISSUE:1330 HOURS IST

DATED: 15.08.2022

FROM: INDIA METEOROLOGICAL DEPARTMENT (FAX NO. 24643965/24699216/24623220)

TO: CONTROL ROOM, NDM, MINISTRY OF HOME AFFAIRS (FAX.NO. 23093750)

CONTROL ROOM NDMA (FAX.NO. 26701729)

CABINET SECRETARIAT (FAX.NO.23012284, 23018638)

PS TO HON'BLE MINISTER FOR S & T AND EARTH SCIENCES (FAX NO.23316745)

SECRETARY, MOES (FAX NO. 24629777)

H.Q. (INTEGRATED DEFENCE STAFF AND CDS) (FAX NO. 23005137/23005147)

DIRECTOR GENERAL, DOORDARSHAN (23385843)

DIRECTOR GENERAL, AIR (23421105, 23421219)

PIB MOES (FAX NO. 23389042)

UNI (FAX NO. 23355841)

D.G. NATIONAL DISASTER RESPONSE FORCE (NDRF) (FAX NO. 26105912, 2436 3260)

DIRECTOR, PUNCTUALITY, INDIAN RAILWAYS (FAX NO. 23388503)

CHIEF SECRETARY, ODISHA (FAX NO. 0674-2536660)

CHIEF SECRETARY, WEST BENGAL (FAX NO. 033-22144328)

CHIEF SECRETARY, TAMILNADU (FAX NO. 044-25672304)

ADMINISTRATOR, ANDAMAN & NICOBAR ISLANDS (FAX NO. 03192- 232656)

CHIEF SECRETARY, PUDUCHERRY (FAX NO 0413-2334145)

CHIEF SECRETARY, ANDHRA PRADESH (FAX NO. 0863-2441029, 08645-246600)

CHIEF SECRETARY, GOVT. OF CHHATTISGARH (FAX NO. 771-2221206)

CHIEF SECRETARY, GOVT. OF JHARKHAND (FAX NO. 651-2400255)

CHIEF SECRETARY, GOVT. OF MADHYA PRADESH (FAX NO. 755-2441076)

CHIEF SECRETARY, GOVT. OF MAHARASHTRA (FAX NO. 022- 22028594)

INDIA IS CELEBRATING ITS 76TH INDEPENDENCE DAY. INDIA METEOROLOGICAL DEPARTMENT WISHES A VERY HAPPY INDEPENDENCE DAY TO ALL.

Sub: Depression over East Madhya Pradesh and adjoining Chhattisgarh

The depression over North Chhattisgarh and neighbourhood moved west-northwestwards with a speed of 30 kmph during last 6 hours and lay centered at 1130 hours IST of 15th August over East Madhya Pradesh and adjoining Chhattisgarh near latitude 22.8^oN and longitude 81.1^oE, about 80 km west of Pendra Road (Chhattisgarh), 80 km east-northeast of Mandla (Madhya Pradesh) and 120 km east of Jabalpur (Madhya Pradesh).

It is very likely to continue to move west-northwestwards and weaken gradually during next 12 hours.

Warnings:

(i) Rainfall:

Chhattisgarh: Rainfall at most places with heavy rainfall at isolated places very likely on 15th August.

East Madhya Pradesh: Rainfall at most places with heavy to very heavy rainfall at isolated places very likely on 15th August.

West Madhya Pradesh: Rainfall at most places with heavy to very heavy rainfall with isolated extremely heavy falls on 15th and heavy to very heavy rainfall at isolated places on 16th August.

Vidarbha: Rainfall at most places with heavy to very heavy rainfall at isolated places on 15th and heavy rainfall at isolated places on 16th August.

Odisha: Rainfall at many places with heavy rainfall at isolated places very likely over western Odisha on 15th August.

(ii) Wind:

Squally wind speed reaching 40-50 kmph gusting to 60 kmph is very likely over north and adjoining central Bay of Bengal and along & off West Bengal and Odisha during next 06 hours and gradually decrease thereafter

(iii) Sea condition

Sea condition is likely to be rough to very rough over north and adjoining central Bay of Bengal and along & off West Bengal and Odisha coasts during next 06 hours and gradually improve thereafter.

(iii) Fishermen Warning

Fishermen are advised not to venture into north and adjoining central Bay of Bengal and along & off West Bengal and Odisha coasts on 15th August evening.

System is under continuous surveillance and the next message will be issued at 2030 hours IST of 15th August, 2022.

(Ananda Kumar Das)
Scientist E, Cyclone Warning Division, New Delhi

Copy to: ACWC Mumbai/ ACWC Kolkata/ ACWC Chennai/ CWC Bhubaneswar/CWC Visakhapatnam/CWC Ahmedabad/ MO Port Blair/MC Raipur/MC Bhopal/MC Hyderabad/RMC Nagpur/MC Goa/MC Bengaluru/CWC Thiruvananthapuram

LEGEND: Heavy Rainfall: 64.5 to 115.5mm, **Very Heavy Rainfall:** 115.6 to 204.4mm **Most Places:** more than 76% of total stations, **Isolated Places:** Less than 25% of total

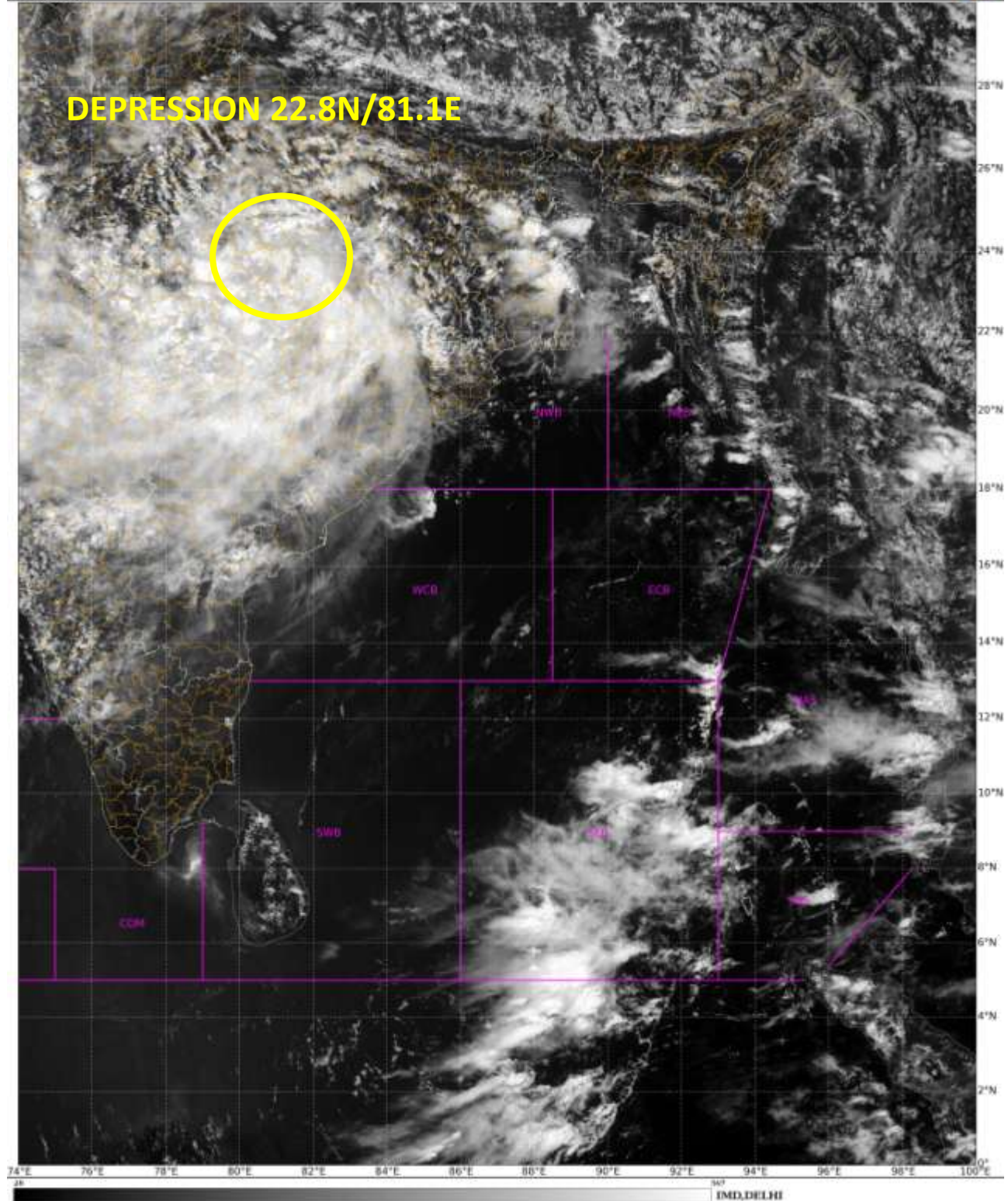


OBSERVED AND FORECAST TRACK OF DEPRESSION OVER EAST MADHYA PRADESH AND ADJOINING CHHATTISGARH BASED ON 0600 UTC OF 15th AUGUST, 2022



DATE/TIME IN UTC
 IST=UTC + 0530
 L: LOW PRESSURE AREA
 WML: WELL MARKED LOW PRESSURE AREA
 D: DEPRESSION (17-27 KT)
 DD: DEEP DEPRESSION (28-33 KT)
 CS: CYCLONIC STORM (34-47 KT)
 SCS: SEVERE CYCLONIC STORM (48-63KT)
 VSCS: VERY SEVERE CYCLONIC STORM (64-89 KT)
 ESCS: EXTREMELY SEVERE CYCLONIC STORM (90-119 KT)
 SuCS: SUPER CYCLONIC STORM (≥ 120 KT)

-  LESS THAN 34 KT
-  34-47 KT
-  ≥ 48 KT
-  OBSERVED TRACK
-  FORECAST TRACK
-  CONE OF UNCERTAINTY



India Meteorological Department wishes you a Happy Independence Day

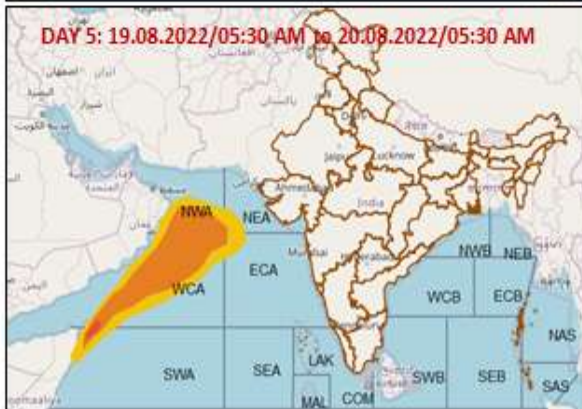
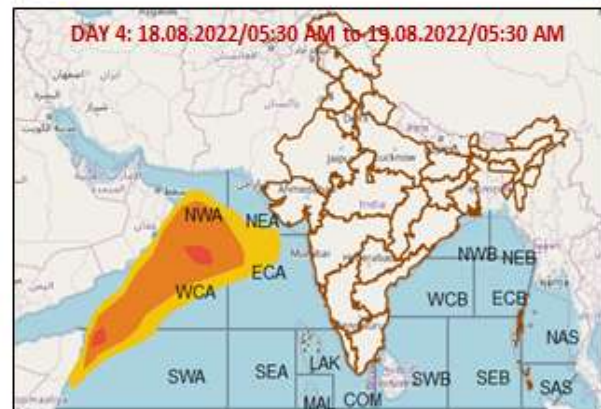
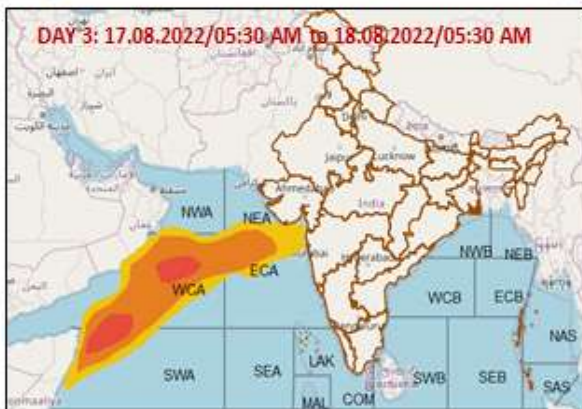
Fishermen Warning Graphics






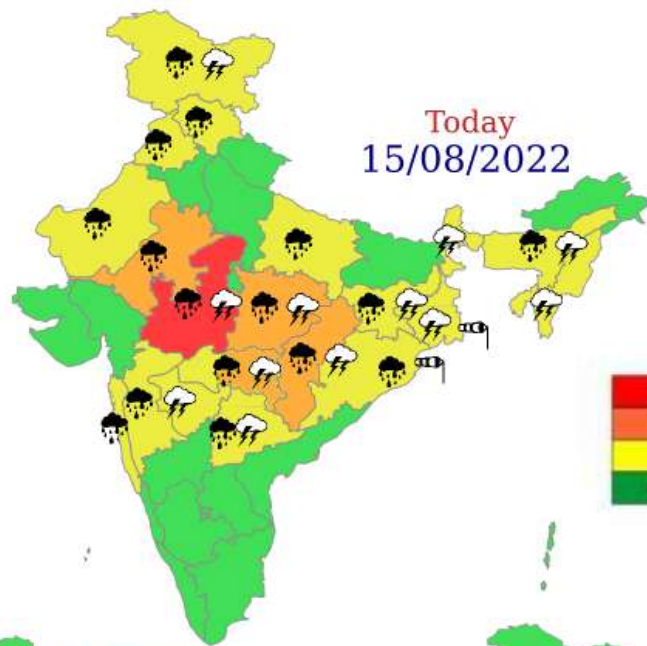
	Squally WX with wind speed 40-50 gusting to 60 kmph
	Squally WX with wind speed 45-55 gusting to 65 kmph
	Squally wind speed 45-55kmph gusting to 65 kmph
	Squally wind speed 50-60kmph gusting to 70 kmph

India Meteorological Department wishes you a Happy Independence Day

Probability of exceedance of maximum sustained winds ≥ 45 kmph



	Probability of exceedance
	Low (1-33%)
	Moderate (34-67%)
	High (68-100%)



WARNING

WARNING (TAKE ACTION)

ALERT (BE PREPARED)

WATCH (BE UPDATED)

NO WARNING (NO ACTION)



- | | | | | | | | |
|--|--------------|--|------------|--|--------------|--|--------------|
| | Heavy Rain | | Heavy Snow | | Thunderstorm | | Dust Storm |
| | Strong Winds | | Visibility | | Cyclone | | Squall/ Hail |
| | Frost | | Cold Wave | | Heat Wave | | Sea State |